

# FALL 2022 CALENDAR



## AUGUST

S M T W T F S

1	2	3	4	5	6	
7	8	9	10	11	12	13
14	15	16	17	18	19	20
21	22	23	24	25	26	27
28	29	30	31			

### SOUTHLAND FAMILY NIGHT- 8.24

LET'S GATHER TOGETHER TO CELEBRATE THE BEGINNING OF A NEW SCHOOL YEAR!  
5:30-7 PM

### SOUTHLAND MISSIONS NIGHT- 8.31

GATHER WITH THE SOUTHLAND FAMILY AND LET'S EXPLORE WHAT IT MEANS TO BE MISSIONAL! 6-7 PM

## SEPTEMBER

S M T W T F S

				1	2	3
4	5	6	7	8	9	10
11	12	13	14	15	16	17
18	19	20	21	22	23	24
25	26	27	28	29	30	

### THINK IN A BOX- 9.24

SATURDAY, SEPTEMBER 24TH, WE ARE GOING TO THINK IN BOX AND PARTICIPATING IN SOME ESCAPE ROOMS! JOIN US FOR A GREAT EVENING OUT!  
Cost is \$35.  
5:30-8:30

## OCTOBER

S M T W T F S

						1
2	3	4	5	6	7	8
9	10	11	12	13	14	15
16	17	18	19	20	21	22
23/30	24/31	25	26	27	28	29

### TRUNK OR TREAT- 10.31

JOIN US IN DECORATING A FEW VEHICLES FOR TRUNK OR TREAT AND PASSING OUT TREATS FOR KIDS IN OUR COMMUNITY! TIME: TBD

## UPCOMING DATES/ EVENTS

### MIDWEEK HYPE- EVERY WEDNESDAY

THIS YEAR 7TH-12TH GRADE WILL MEET ON WEDNESDAY NIGHTS FROM 6-7:30 FOR GAMES, WORSHIP, DEVOTIONALS, AND DISCUSSIONS. JOIN US EACH WEEK!

### YOUTH CHOIR- SUNDAYS @5PM

WE WILL BEGIN A NEW YEAR OF YOUTH CHOIR SUNDAY, AUGUST 21ST! COME JOIN US FOR MUSIC, WORSHIP, AND FELLOWSHIP!

### THINK IN A BOX- 9.24

WE ENJOY ESCAPE ROOMS AND WHAT WE ENJOY MORE IS DOING THEM WITH OUR FRIENDS! COME "THINK IN A BOX" WITH US AND HAVE A GREAT TIME WITH SOME DINNER! WE ARE SO EXCITED TO DO THIS WITH Y'ALL! 5:30-8:30PM. Cost is \$35

### GOING GOBBLE- 11.16

SOUTHLAND STUDENTS WILL GATHER AROUND THE TABLE AND ENJOY AN EVENING WITH GREAT FOOD AND FELLOWSHIP! EACH PERSON WILL BRING A SIDE DISH OF THEIR CHOICE. NO SIGN UP SHEET. JUST BRING WHAT YOU WANT!  
5:30-8PM

## WHEN WE MEET

- SUNDAY SCHOOL 10:10 AM IN THE LOFT
- MIDWEEK HYPE 6-7:30 IN THE LOFT

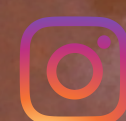
## CONTACT US:

YOU CAN CONTACT SOUTHLAND STUDENT MINISTRY BY REACHING OUT TO ALEX LEMUS THROUGH EMAIL AT [ALEX@SOUTHLANDBAPTIST.ORG](mailto:ALEX@SOUTHLANDBAPTIST.ORG) OR BY CALLING THE CHURCH OFFICE AT [325.949.9633](tel:325.949.9633)! YOU CAN ALSO FIND INFORMATION ABOUT EVENTS ON THE WEBSITE AND OUR SOCIAL MEDIA

## GET CONNECTED:



@SOUTHLANDSTUDENTMINISTRY



@SOUTHLANDSTUDENTS



[SOUTHLANDBAPTIST.ORG](http://SOUTHLANDBAPTIST.ORG)